

*GS Engineering is an agile small business with corporate offices in Houghton, Michigan delivering advanced engineering solutions to military and commercial transportation markets through structural design, analysis, product development, and correlated testing services.*

**PRODUCT DEVELOPMENT SUPPORT**

Provide feedback to support 'Design For Manufacturability' in order to bolster quality, increase efficiency, and lower cost.



**CERTIFIED WELDING INSPECTION SERVICES**

Specializing in AWS D1.1, D1.2, D1.3, TACOM 12479550.

**MANUFACTURING PROGRAM MANAGEMENT**

**CORE PROCESSING CAPABILITIES**

**Laser Cut / Water Jet:**

- Fast
- Flexible
- Cost effective
- Precision tolerancing



**Bending:**

- Flat plate / sheet
- Tube

**Machining:**

- CNC multi-axis



**Turning:**

- CNC

**Extrusion:**

- Aluminum

**Welding:**

- Aluminum
- Steel



**Secondary Processing:**

- Plating
- Heat Treat / Annealing
- Black Oxide
- Nitride

**Packaging:**

- MIL-STD-129
- MIL-STD-130
- MIL-STD-2073



**Assembly**

**QUALITY SYSTEM**

**ISO 9001:2008 Compliant**

**Supplier Quality Manual:**

- Signed acceptance from each vendor / partner

**First Piece Inspection / AS 9102:**

- 100% dimensional inspection of each component.
- PPAP
- Material certification
- Control Plan / Shop Floor Traveler

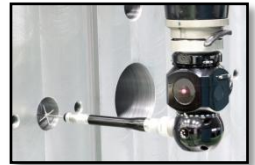


**In Process Inspection:**

- Visual weld inspection
- Macro Etch
- In process dimensional checks
- Material Properties
- Lot traceability

**Corrective Actions**

- 8D format



**PROCUREMENT**

**RFQ, Purchase Orders, & Invoicing:**

- Fabricated components
- COTS items
- Specialty items
- Prototype & Production quantities

**Cost Tracking by Program**

**Logistics**

- Standard express services: UPS, Fed Ex, etc.
- Dedicated Truck and Van lines
- LTL – "Less Than (full) Load"
- Expedite services

**DFARS / Buy American Act Compliant**

**Competitive Quoting**

**Product Placement by Vendor Cost, Capabilities, & Rating**

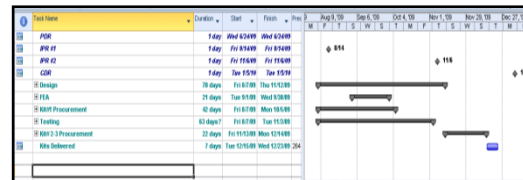
**Inventory Management**



**SUPPLIER DEVELOPMENT**

**Detailed Project Planning:**

- Microsoft Project plans
- GS Engineering Excel timelines
- Fabrication tracker



**Continuous Improvement:**

- Feedback and tracking of key performance metrics
- Development of performance plans

**Supplier Score Cards:**

- Quality output
- On time delivery
- Supplier Corrective Action Request (SCAR)



**Weld Replica Plan & Evaluation**

**On Site Inspections / System Audits**