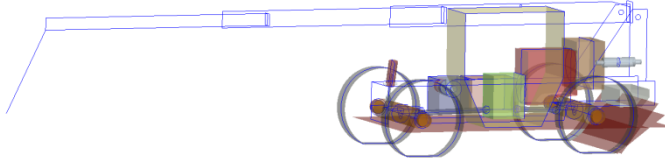


# Success Story: Off-Highway

## Requirements:

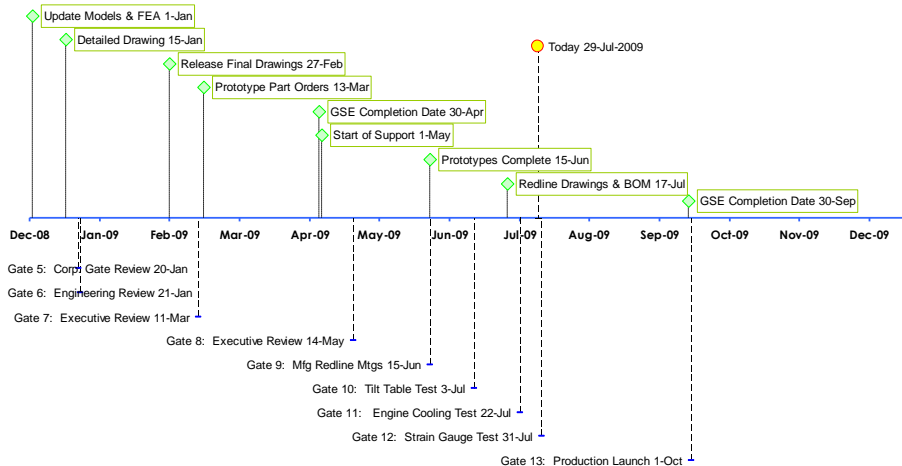
- Ground-up new vehicle development
- Integration of new technology
- Critical cost targets
- 25% GVW reduction
- 50% assembly time reduction
- Critical production launch timing



## Processes:

- Benchmark vehicle testing
- Competitive component research & sourcing
- Conceptual skeleton modeling
- Iterative design for manufacturing & cost
- Concurrent design & FEA
- Utilize high-strength materials
- Hardware standardization

## Timing:



## Results:

- Innovative marketable product design
- Integration of cutting-edge technology
- Cost targets **below by 3.0%**
- GVW targets **achieved**
- Assembly time reduction **achieved**
- Prototype build timing **accelerated by 6 weeks**

